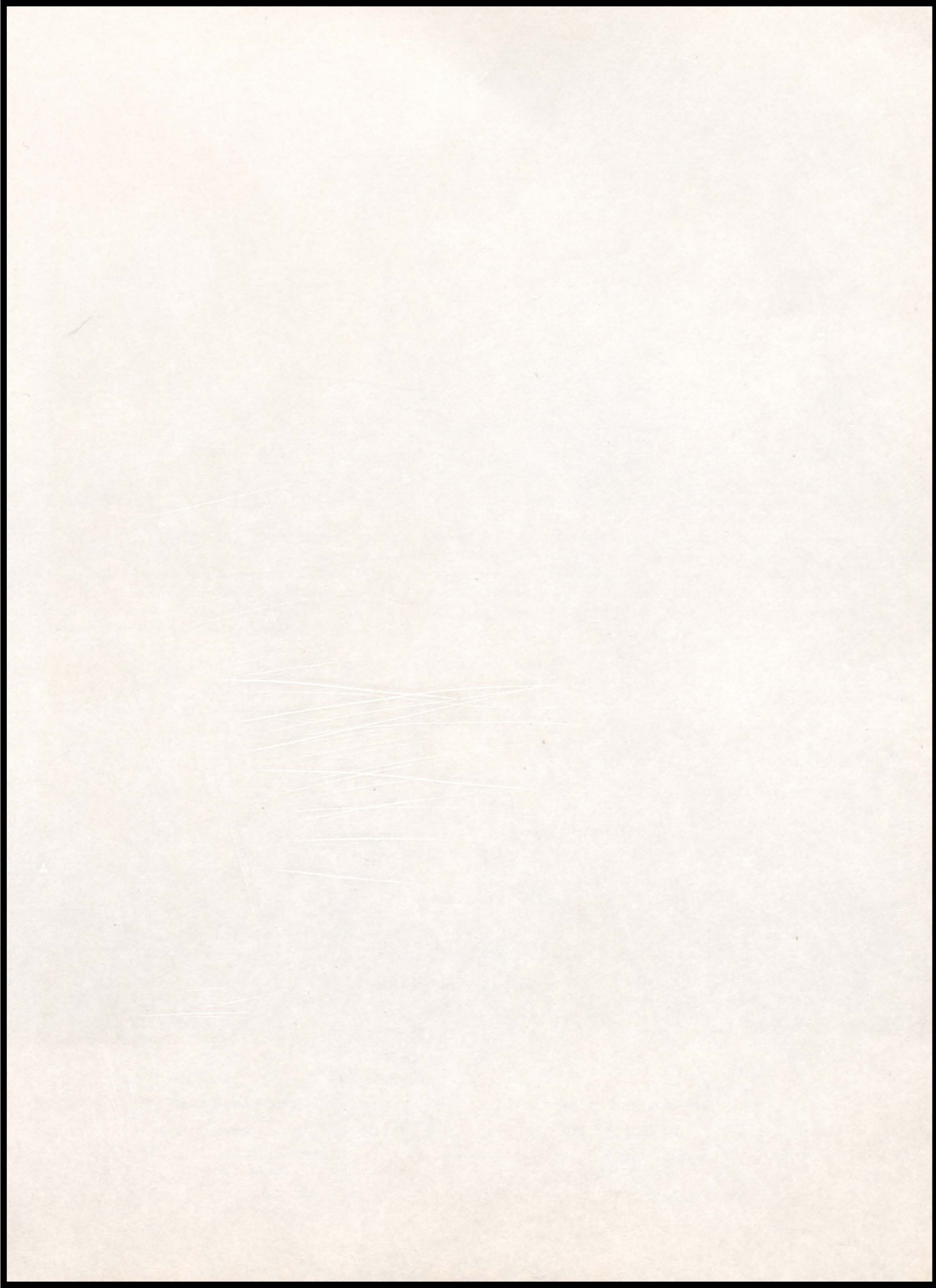
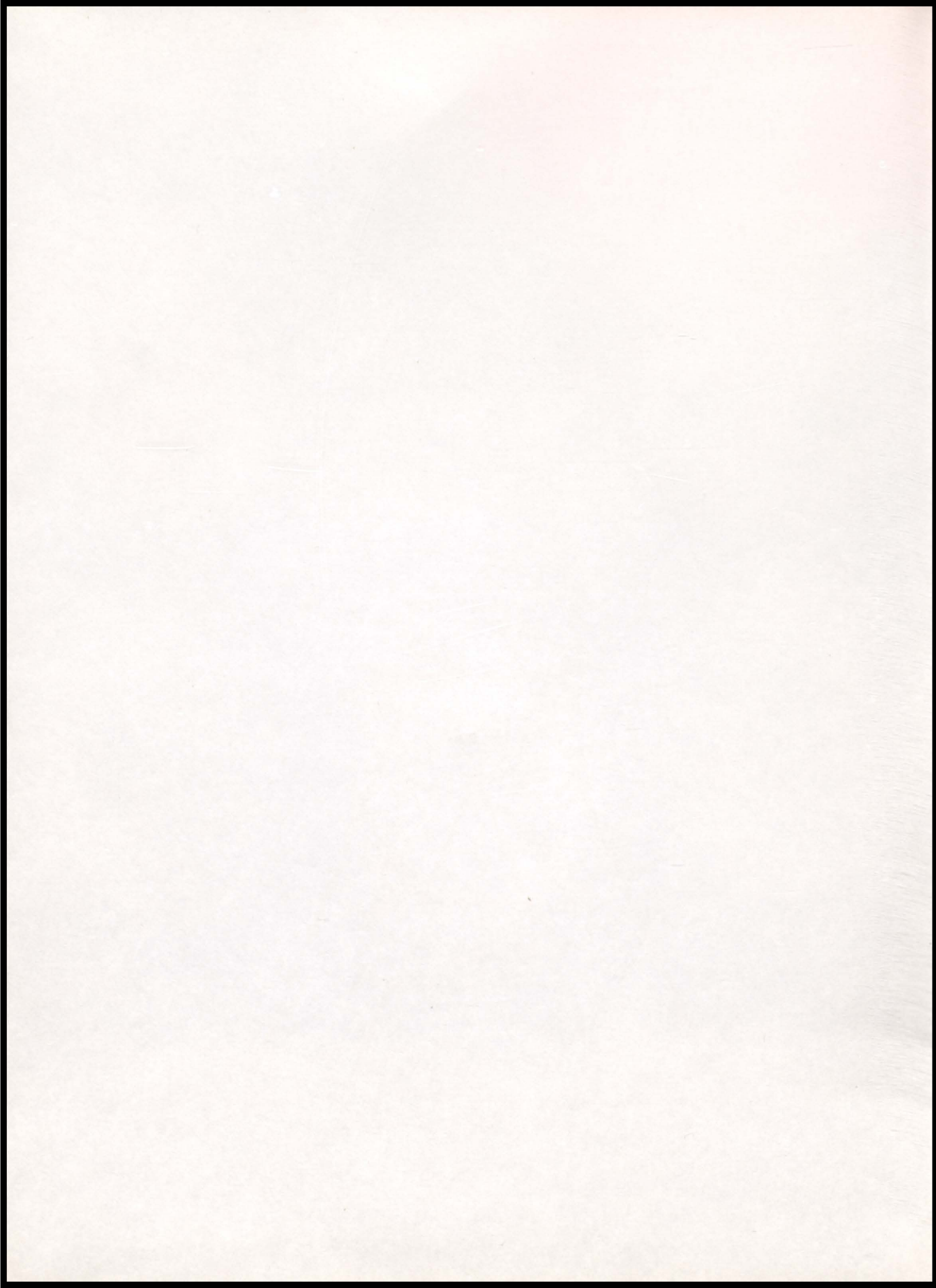


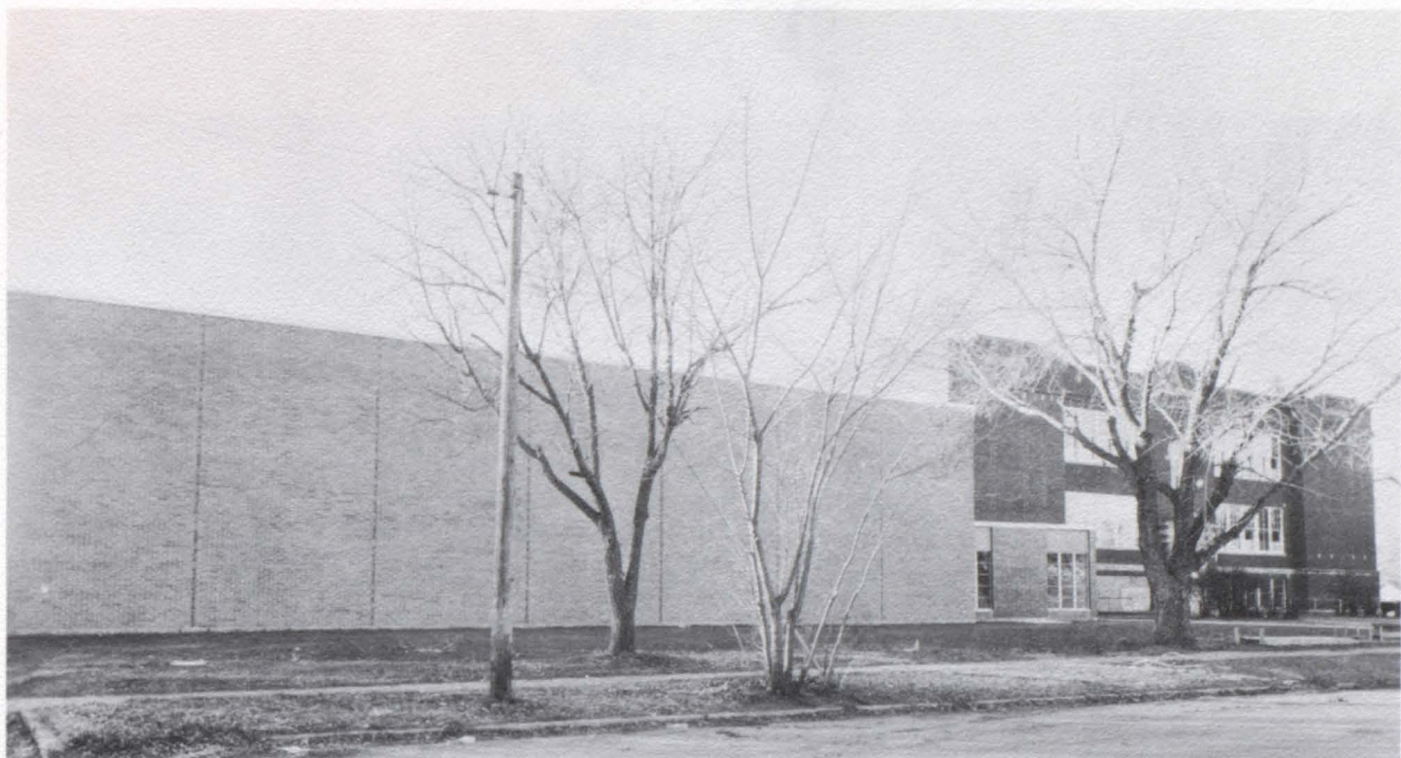
EAGLE

THIS BOOK BELONGS TO:

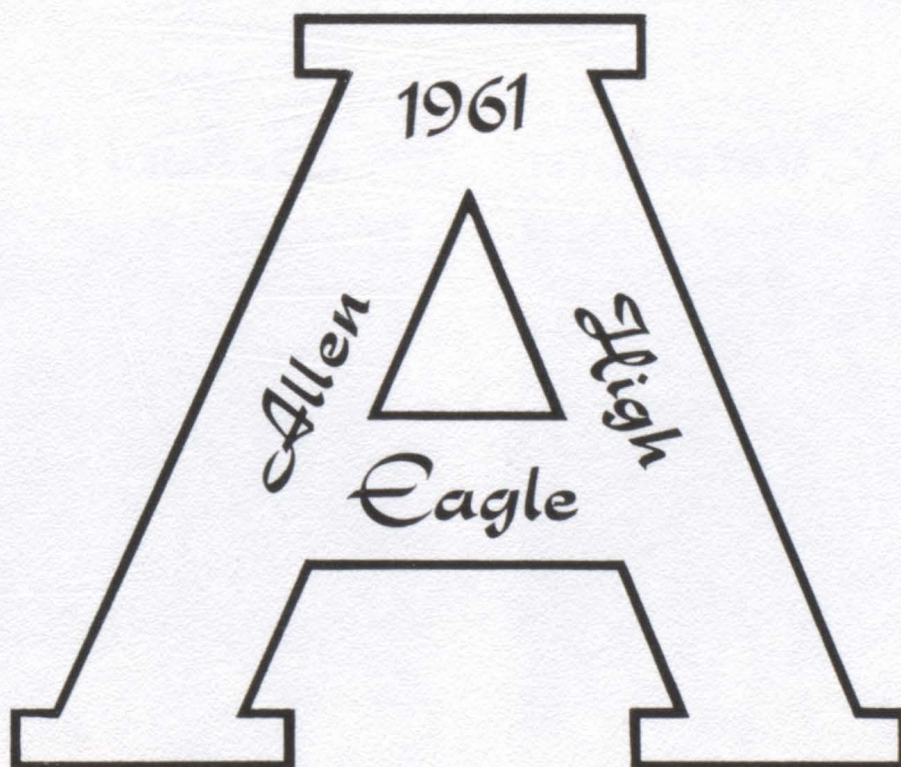
---







On January 11, 1961, dedication ceremonies were held for the new school addition. A \$160,000 bond issue provided funds for the improvement. More space and better facilities are now available. The new building consists of a kitchen, music room, two locker rooms and a multi-purpose auditorium. The remodeling of the previous building provides for kindergarten and first grade rooms, also, a science department consisting of a class room, laboratory, and developing rooms. Students and faculty alike wish to give their sincere thanks to the people in the community and to those who helped in the construction of the building.



Editor ..... Lavonne Mattes  
 Business Manager ..... Loretta Kjer  
 Asst. Editor ..... Anne Carpenter  
 Asst. Bus. Manager ..... Ron Isom

# Faculty



First Row: Mrs. Durant, Office Secretary; Mrs. Malcom, Spanish; Mrs. Hughes, English; Mrs. Mitchell, Home Economics.

Second Row: Mr. McGee, Mathematics; Mr. Proett, Music; Mr. Mozer, Business Education; Mr. Carter, Coach; Mr. Grus sing, Agriculture; Mr. Mitchell, Superintendent and Principal.

## Cooks and Custodian



Marv Wheeler, Custodian; Alta Holmes, Alice Steele, Fran Schubert, Cooks.

## School Board



First Row: Herbert Ellis, Treasurer; Merle VonMinden, President; William Snyder, Secretary.

Second Row: Vern Hubbard, Lester Ellis, James Warner.

THIS PAGE SPONSORED BY  
TOM RIVERS

# Seniors

Mr. Mitchell  
Sponsor



DEAN BOESHART  
Class V. Pres. 1,4, Sec. 2;  
"A" Club 2,3,4, Pres. 4;  
FFA 1,2,3,4, Pres. 3;  
Football 1,2,3,4; Basket-  
ball 1,2,3,4; Track 1,2,3,4;  
Class Play 3,4; Mixed  
Chorus 4; Student Council  
1,2; Paper Staff 4; Home-  
coming King 4; Declam 3,4.

GRACIE JACOBSON  
Pep Club 1; FHA 1,2,3,4;  
Class Play 3,4; Mixed  
Chorus 1,2; Girl's Glee 1,2;  
Declam 2,3,4; Paper Staff  
4; Librarian 3,4.



CARLENE FRERICHS  
Pep Club 1,2,4; FHA 1,2,  
3,4, Degree Chrman. 3,4;  
Girl's Glee 1; Paper Staff 4.

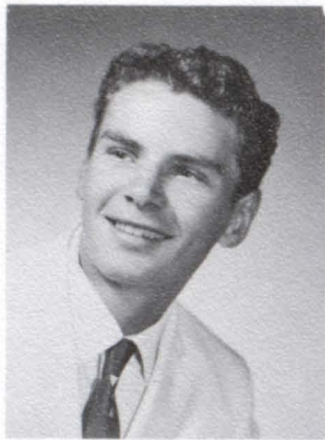
RODNEY JEWELL  
"A" Club 3,4, V. Pres. 4;  
FFA 1,2,3,4; Football 1,4;  
Basketball 1,2,3,4; Track  
1,2,3,4; Class Play 3,4;  
Paper Staff 3.



BRUCE HICKMAN  
Class Treas. 4; "A" Club  
4; Football 4; FFA 1; Class  
Play 3,4; Mixed Chorus 1,2,  
3,4; Band 3,4; Declam 3,4;  
Paper Staff 3; Boys Quar-  
tette 4; Homecoming 2nd  
Attendant 4; Annual Staff 4.



GLORIA JOHNSON  
Pep Club 1,2,3,4, Treas. 4;  
FHA 1,2,3,4, Sec. 4; Class  
Play 3,4; Mixed Chorus 1;  
Girl's Glee 1; Declam 3,4;  
Paper Staff 3; Annual Staff  
4; Librarian 4; Girls' State  
3.



**BOB JORDAN**  
 Class V. Pres. 1, Sec. 4, Treas. 3; "A" Club 3,4; FFA 1,2; Football 1,2,3,4; Basketball 3,4; Track 1,2,3,4; Class Play 3,4; Mixed Chorus 3; Paper Staff 4; 1st Homecoming Attendant 4; Declam 3.

**LAVONNE MATTES**  
 Class Sec. 1, Class Treas. 2; Pep Club 1,2,3,4, V. Pres. 4; FHA 1,2,3,4, Treas. 2,4; Class Play 3,4; Mixed Chorus 1,2,3; Girl's Glee 1,2,3; Sextette 2; Declam 2,3,4; Annual Staff 3,4; FFA Sweetheart 3; Cheerleader 2,3; One Act Play 3; Homecoming Queen 4.



**LORETTA KJER**  
 Class Pres. 4; Pep Club 1,2,3,4; FHA 1,2,3,4; Class Play 3,4; Mixed Chorus 1,2,3,4; Girl's Glee 1,2,3,4; Sextette 2,3,4; Student Council 1; Band 1,2,3,4; Declam 3,4; Annual Staff 3,4; Cheerleader 4.



**CAROL MITCHELL**  
 Class Pres. 1,3; Pep Club 1,2,3,4, V. Pres. 3, Pres. 4; FHA 1,2,3,4, Pres. 4, Sec. 3, Publicity Chrmn. 2; Class Play 3,4; Mixed Chorus 1,2,3,4; Girl's Glee 1,2,3,4; Sextette 1,2; Band 1,2,3,4; Declam 1,2,3,4; Annual Staff 4; FFA Sweetheart 1; Cheerleader 2; One Act Play 2; Chorus Pres. 3; Band Pres. 4.

**MARGE LEEDOM**  
 Class Sec. 3; Pep Club 2,3,4; FHA 1,2; Class Play 3,4; Girl's Glee 1; Declam 2,3,4; Paper Staff 4; Annual Staff 4; Librarian 3,4.



**CLINTON OSBAHR**  
 Class V. Pres. 3; Football 1,4; Basketball 2,3,4; Track 1,2,3; Class Play 2,3.



**LARRY MALCOM**  
 FFA 1,2,3,4; Basketball 2; Track 4; Class Play 3,4; Paper Staff 3.

**FRANK PLUEGER**  
 "A" Club 2,3,4, Sec. 4; FFA 1,2,3,4, Pres. 4; Football 1,2,3,4; Track 1,2; Class Play 3,4; Declam 3,4; Annual Staff 4; Boys' State 3.



THIS PAGE SPONSORED BY  
 CHRISTENSEN ELECTRIC





SHARON PRESCOTT  
 Class V. Pres. 1,3; Pep Club 1,2,3,4, Sec. 4; FHA 3,4, Parliamentarian 4; Class Play 3,4; Mixed Chorus 1,2,3,4; Girl's Glee 1,2,3,4; Sextette 3,4; Declam 1,3; Paper Staff 1; Annual Staff 4; Cheerleader 2,3; One Act Play 1,3; FFA Sweetheart 4; First Homecoming Attendant.



BARBARA SHERMAN  
 Class Sec. & Treas. 1; Class Play 3,4; Mixed Chorus 1; Paper Staff 3; Annual Staff 4; Cheerleader 1; One Act Play 1; Pep Club 1.



DEANNA RASMUSSEN  
 Pep Club 1,2,3,4; FHA 1,2,3, Treas. 3; Class Play 3,4; Mixed Chorus 1,2,3,4; Girl's Glee 1,2,3,4; Sextette 2; Student Council 2; Band 1,2,3; Declam 2,3; Paper Staff 4; Cheerleader 3,4; One Act Play 3; Librarian 3; Brass Sextette 2; Second Homecoming Attendant.



DELMER STEELE  
 FFA 1,2,3,4, V. Pres. 4; Football 4; Class Play 3,4; Paper Staff 3.

CLASS COLORS

Lavender and White

CLASS FLOWER

Baby Orchid

CLASS MOTTO

"What we are now is God's gift to us;  
 What we will be is our gift to God."

CLASS OFFICERS

Loretta Kjer.....President  
 Dean Boeshart.....Vice President  
 Bob Jordan.....Secretary  
 Bruce Hickman.....Treasurer

# Juniors



First Row: V. Larson, W. Green, A. Carpenter, K. Rohde, P. McCord, B. Benstead, R. Engstedt.  
 Second Row: Sponsor, Mrs. Malcom, L. Schlines, T. Brawner, D. Rohde, R. Isom, P. Gillaspie, L. Holmes.  
 Third Row: R. Green, P. Thompson, D. Chase, M. Luhr, T. Fahrenholz, D. Heaton.

## Class Officers

President..... Lynda Holmes  
 Vice-President..... Ron Isom  
 Secretary..... Rhonda Engstedt  
 Treasurer..... Karen Rohde



Lynaa Holmes, Class President, is shown presiding over a class meeting.

THIS PAGE SPONSORED BY  
 CASH STORE

# Sophomores



First Row: K. Isom, K. Isom, E. Black, S. Blohm, M. Lunz, M. Adams, K. Kjer.  
 Second Row: Sponsor, Mrs. Hughes, R. Roberts, L. Geiger, D. Durant, R. Blohm, D. Rice, D. Smith.  
 Thira Row: A. Rastede, B. Noe, R. Smith, R. Wheeler, D. Anderson, L. Book.



The Sophomore Class held a class supper in the lower hall.

## Class Officers

President.....	Earlene Black
Vice-President.....	Allan Rastede
Secretary.....	Roger Roberts
Treasurer.....	Richard Smith

THIS PAGE SPONSORED BY  
 ALLEN LUMBER AND HARDWARE CO.

# Freshmen



First Row: S. Sullivan, S. McCaw, D. Biggerstaff, I. Osbahr, E. Sherman, D. Schroeder.  
 Second Row: Sponsor, Mr. Mozer, F. Dowling, D. Lisle, C. Self, R. Schubert.  
 Third Row: B. Ellis, D. Osbahr, J. Brawner, D. Hickman, D. Gotch, G. Sullivan.

## Class Officers

- President..... Dwight Gotch
- Vice-President..... Dick Osbahr
- Secretary..... Sandra McCaw
- Treasurer.....Dean Lisle



A freshman committee is shown talking over plans for the class.

THIS PAGE SPONSORED BY  
 MCCAW'S WAYNE FEEDS

# Declam



First Row: M. Lunz, W. Green, V. Larson, M. Leedom, C. Mitchell, G. Johnson, L. Mattes, E. Black, S. McCaw.  
Second Row: Adviser, Mrs. Malcom, K. Isom, R. Engstedt, P. Gillaspie, P. McCord, L. Kjer, D. Rasmussen, K. Kjer, L. Holmes, A. Carpenter, D. Schroeder.  
Third Row: D. Boeshart, R. Roberts, B. Jordan, T. Fahrenholz, L. Schlins, R. Isom, M. Luhr, B. Hickman, F. Plueger, D. Heaton.

## Local Declam Contest



The local declam contest was held February 23 under the direction of Mrs. Malcom. There were 35 high school students taking part in 7 main divisions. The winners of the local contest participated in the county contest held February 27 at Allen.

The purpose of the speech activities was to train students to convey the thought, feelings, and mood of literature and to deliver speeches with fluency and effectiveness.

## Annual Staff



First Row: G. Johnson, R. Isom, L. Kjer, L. Mattes, A. Carpenter, Mr. Mozer, Adviser.  
 Second Row: S. Prescott, M. Leedom, B. Sherman, C. Mitchell.  
 Third Row: F. Plueger, B. Hickman.

## Paper Staff



First Row: M. Leedom, B. Jordan, D. Rasmussen, G. Jacobson.  
 Second Row: D. Chase, C. Frerichs, B. Benstead, Mr. Mozer, Adviser, K. Rohde, P. Gillaspie, D. Boeshart.  
 Not Pictured: A. Carpenter, V. Larson, L. Malcom, L. Mattes, P. McCord, F. Plueger, L. Steube.

THIS PAGE SPONSORED BY  
 D. W. BRUSTER D.V.M.

# F. H. A.

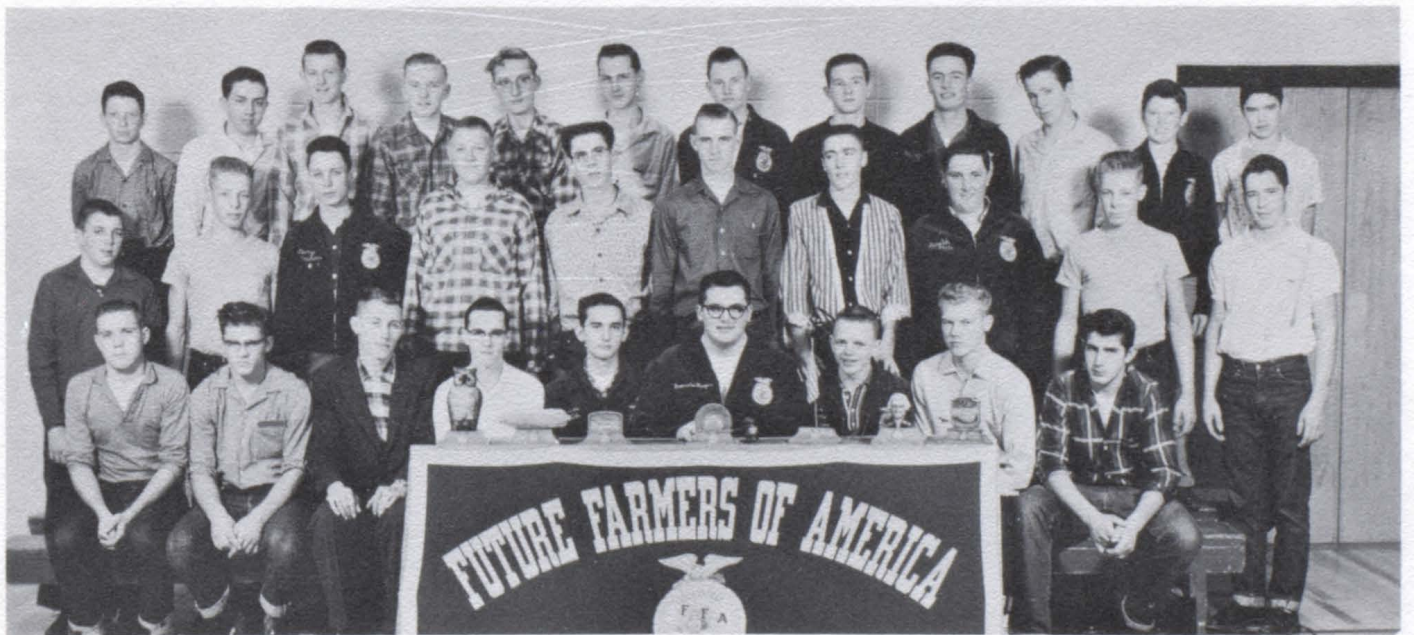


First Row: A. Carpenter, C. Frerichs, L. Mattes, P. McCord, C. Mitchell, G. Johnson, L. Holmes, K. Isom, S. Prescott, P. Gillaspie.

Second Row: Sponsor, Mrs. Mitchell, G. Jacobson, E. Black, L. Kjer, K. Kjer, K. Isom, V. Larson.

Third Row: S. Blohm, K. Rohde, I. Osbahr, D. Schroeder, S. McCaw, M. Lunz, W. Green.

# F. F. A.



First Row: D. Boeshart, R. Wheeler, Sponsor, Mr. Grussing, R. Green, D. Steele, F. Plueger, D. Chase, R. Roberts, T. Fahrenholz.

Second Row: L. Book, R. Smith, L. Malcom, R. Blohm, D. Durant, R. Isom, L. Schlines, D. Rice, D. Smith, D. Osbahr.

Third Row: D. Lisle, D. Heaton, L. Geiger, D. Anderson, B. Ellis, D. Rohde, R. Jewell, D. Gotch, M. Luhr, J. Brawner, A. Rastede, F. Dowling.

THIS PAGE SPONSORED BY  
ANDERSON PHARMACY  
DURANT BROTHERS

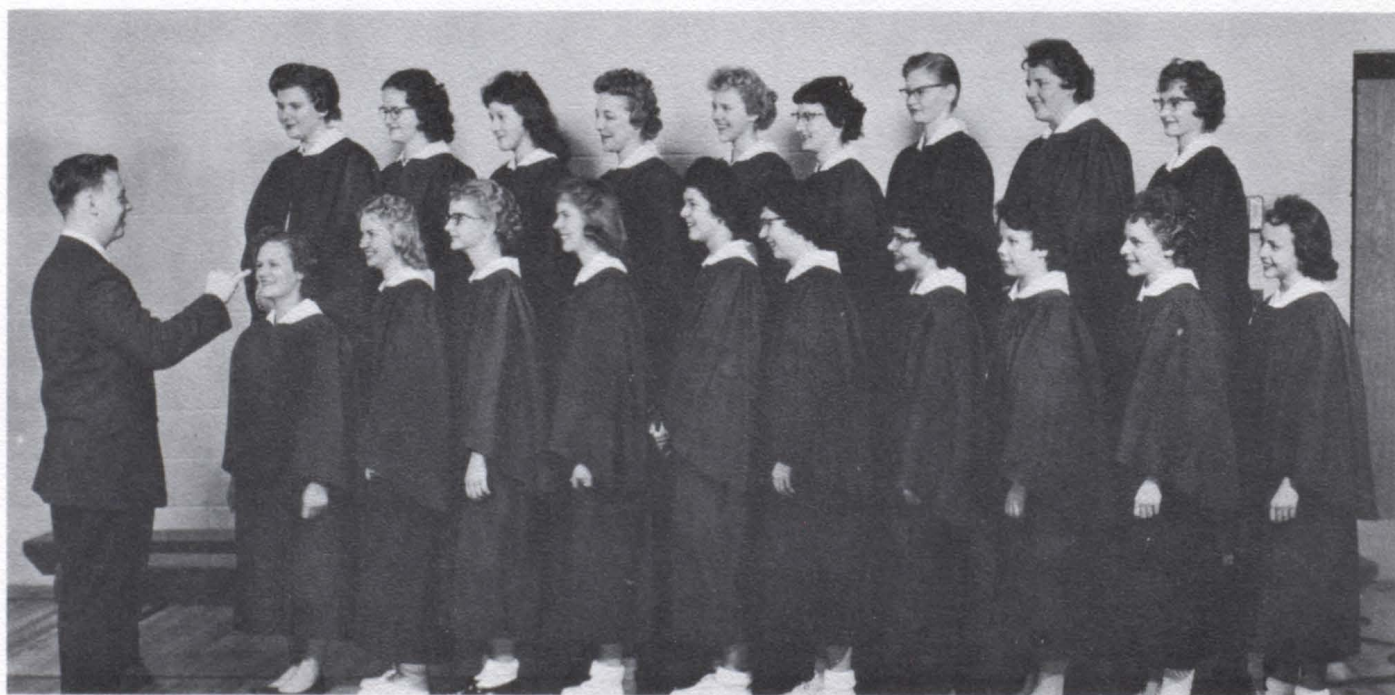
## Girls Sextette and Girls Trio



First Row: D. Schroeder, S. McCaw, I. Osbahr.

Second Row: V. Larson, W. Green, L. Kjer, S. Prescott, L. Holmes, A. Carpenter.

## Girls Glee



First Row: Instructor, Mr. Proett, V. Larson, R. Engstedt, L. Kjer, P. McCord, E. Black, P. Gillaspie, L. Holmes, I. Osbahr, K. Kjer, D. Schroeder.

Second Row: M. Lunz, K. Isom, W. Green, S. Prescott, S. McCaw, C. Mitchell, S. Blohm, K. Isom, A. Carpenter.

THIS PAGE SPONSORED BY  
HUTCHINGS LOCKER  
JACK BROWNELL



## Mixed Chorus



First Row: S. McCaw, R. Engstedt, L. Kjer, V. Larson, C. Mitchell, W. Green, S. Prescott, L. Holmes, K. Isom, K. Kjer, A. Carpenter.  
 Second Row: Instructor, Mr. Proett, M. Lunz, S. Blohm, P. McCord, E. Black, L. Book, R. Green, C. Self, K. Isom, P. Gillaspie, D. Schroeder, I. Osbahr.  
 Third Row: D. Boeshart, R. Roberts, B. Hickman, L. Schlines, T. Fahrenholz, D. Hickman, R. Wheeler, D. Heaton, R. Schubert.

## Band

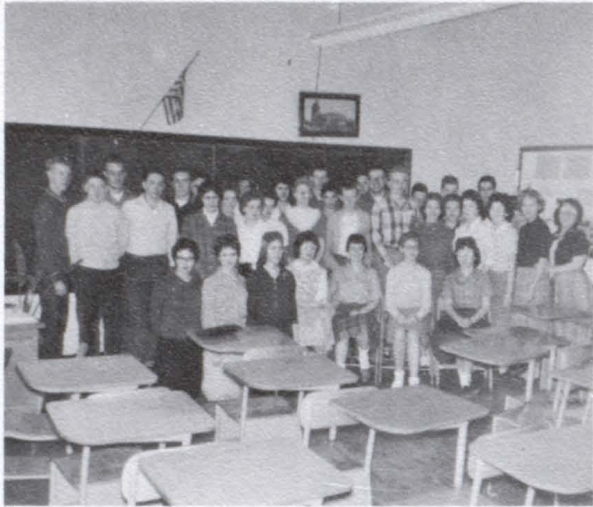


First Row: L. Holmes, R. Green, J. Carlson, M. Jewell, L. Kjer, C. Mitchell.  
 Second Row: S. McCaw, C. Jeffery, E. Black, P. McCord, A. Carpenter, R. Brownell, R. Wheeler, S. Snyder, L. Schlines.  
 Third Row: V. Green, D. Carr, N. Ellis, D. Ellis, K. Kjer, R. Engstedt, B. Ellis, D. Hickman, B. Hickman, Instructor, Mr. Proett, S. Moseman, R. Durant, C. Ellis.

THIS PAGE SPONSORED BY  
 EARLENE'S BEAUTY SHOP  
 ALLEN OIL CO. - ROBERTS

# Highlights of the School Year

## ONE-ACT PLAYS



Four one-act plays were presented March 4 under the direction of Mrs. Hughes. "Where's That Report Card" was presented by the Freshman Class. The title of the Sophomore's play was "The Ring and the Look." A play consisting of members from each class was entitled "Let's Make-Up." "The Powers That Be" was presented by the Senior Literature Class.

"There Goes the Bride" was presented by the Junior Class on November 18 and 19. Patty McCord, as Phyllis Curtis, was the leading actress and Larry Schlines, as Tom Eldridge, was the leading actor. Mrs. Hughes was the director.

As the curtain rises, we see Phyllis in her wedding gown. In order to get an inheritance left to her by her aunt, she must be married by midnight the following night. Lewis is going to marry Phyllis for her money.

There is a car accident and the victim (Tom Eldridge) is brought to the Curtis home. Tom's father and Phyllis' aunt had gone together but they hadn't married. An attempt had been made for Tom and Phyllis to meet but they hadn't been interested.

Phyllis finally decides to marry Tom.

## JUNIOR CLASS PLAY



## DEDICATORY CEREMONIES



Dedicatory ceremonies for the new school addition were held January 11, 1961 in the new auditorium. Dr. F. B. Decker, Commissioner of Education in the state of Nebraska, was the main speaker.

Mr. Mitchell introduced the guest speakers.

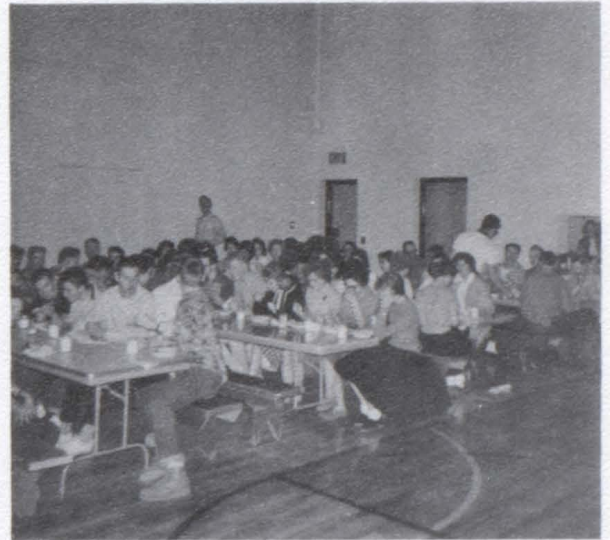
Mr. Merle VonMinden, President of the Board of Education, accepted the presentation of the building.

The dedication is a milestone in Allen's history as many people came to see the ceremonies and to take tours of the school building.

THIS PAGE SPONSORED BY  
DICK JUNG OF JOSTENS  
SCHROEDER'S STATION

## EATING IN THE NEW GYM

The students have found that they can have many activities in their new gym, such as, basketball games, dances, and meetings. The students also eat in the gym. They get their meals from the cafeteria and take them to the gym. After they have eaten their lunch, the dirty plates are returned to the cafeteria by a dish return located on the west side of the gym.



## SPANISH CHRISTMAS PARTY



On December 24, ex-Spanish students were invited to a Christmas Spanish Party given by the present Spanish students. Christmas carols were sung in Spanish. A pinata representing Santa Claus was hung in the middle of the room. The guests and students filled the pinata with nuts, candy, and popcorn. The pinata was broken at the end of the party and a great scramble was made to get some of the candy and nuts.

## ALLEN WINS TWO TROPHIES

Two trophies have been added to the new trophy case this year. The first trophy was won in the Lewis and Clark Tournament when Allen placed second. Allen defeated Ponca giving them the chance for championship, but Allen was defeated by Laurel giving Allen second place.

Allen won the Consolation Trophy in the Dixon County Tournament by defeating Emerson Sacred Heart.



THIS PAGE SPONSORED BY  
FARMERS CO-OP ELEVATOR CO.  
LAVERNE SCHROEDER

## FHA BASKETBALL GAME



On February 3, 1961, a polio benefit basketball game was played by the FHA girls. The FHA members were divided into two teams. A sudden-death overtime was held to break the tie at the end of the game. The proceeds went for the polio drive and the trophy case fund.

The FFA boys played volleyball during the half. Two games were played with each team winning one game.

After the girls' game, the faculty and the school board members played basketball. The faculty defeated the school board.

## FHA-FFA SWEETHEART DANCE



Sharon Prescott and Larry Geiger were crowned FFA and FHA King and Queen on February 25, 1961. Larry was crowned by last year's Queen, Lavonne Mattes. Sharon was crowned by Ron Isom, FHA King of 1960.

The FFA presented a white corduroy jacket to Sharon. The FHA gave Larry an identification bracelet.

Records provided the entertainment for the evening. Larry Schlines sang and played a few selections with his guitar.

## SENIOR CLASS PLAY



The Senior Class Play was presented May 5 under the direction of Mrs. Hughes. This was the first class play to be held in the new auditorium. The students appreciate all the help that Mrs. Hughes gave them in making the presentation possible.

The name of the comedy play was A Rocket in His Pocket by Row Peterson.

THIS PAGE SPONSORED BY  
LINDAHL'S STORE  
GOOD'S GARAGE

# Homecoming



Lavonne Mattes and Dean Boeshart took top honors at the Homecoming activities on October 14, 1960. The King and Queen were crowned by last year's King and Queen Keith Fahrenholz and Karan McCord. Sharon Prescott and Bob Jordan were first attendants. Second attendants were DeAnna Rasmussen and Bruce Hickman.

Carol Mitchell announced the royalty. The royalty was led in by the Cheerleaders and four of the Junior boys.

For the first time in two years, the Homecoming activities took place in the high school auditorium. The stage was beautifully decorated with blue and gold streamers.



A skit in progress



At a game

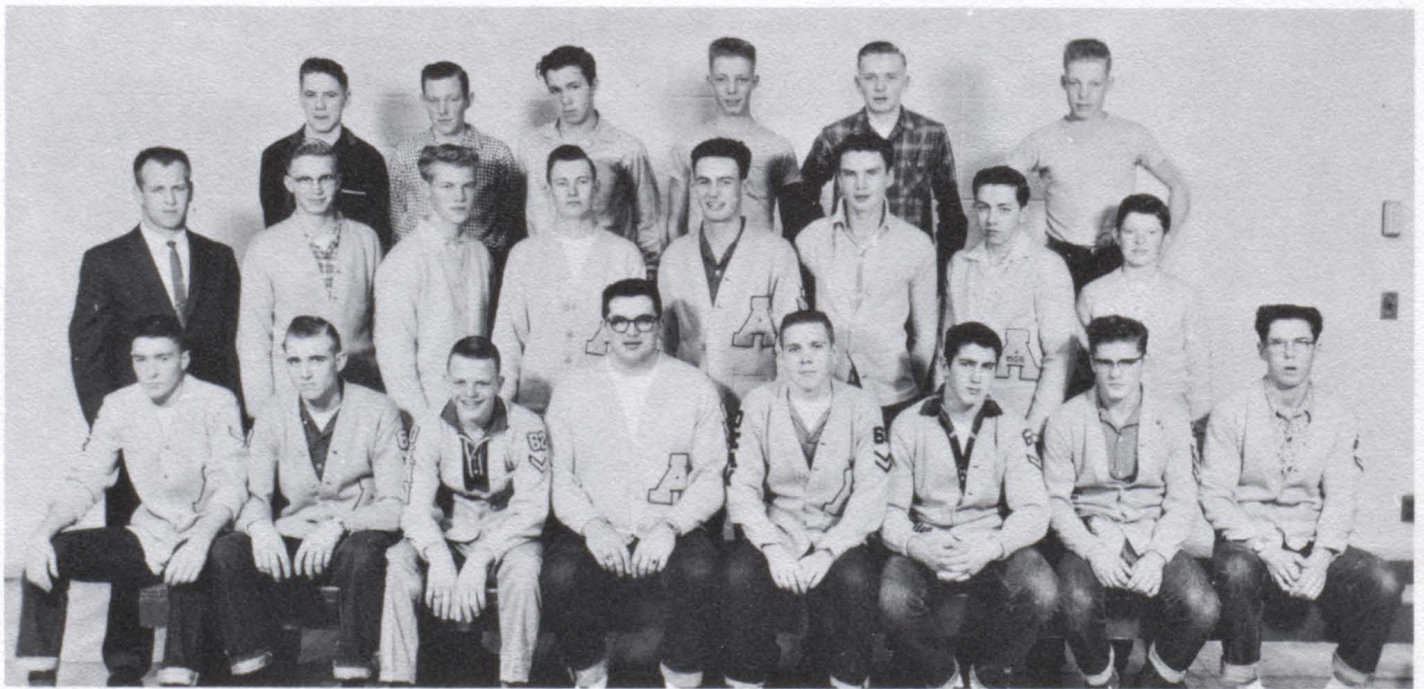
THIS PAGE SPONSORED BY  
CARPENTER'S CREAM STATION  
SECURITY STATE BANK

## Dep Club



First Row: R. Engstedt, L. Mattes, D. Rasmussen, P. McCord, C. Mitchell, L. Holmes, Mr. Mitchell, Sponsor.  
 Second Row: S. Prescott, C. Frerichs, A. Carpenter, L. Kjer, P. Gillaspie, K. Kjer, K. Isom, G. Johnson.  
 Third Row: E. Black, M. Leeaom, S. McCaw, D. Schroeder, V. Larson, M. Lunz, K. Isom.

## "A" Club



First Row: L. Schlines, R. Isom, D. Chase, F. Plueger, D. Boeshart, T. Fahrenheit, R. Wheeler, D. Durant.  
 Second Row: Mr. Carter, Coach, B. Hickman, R. Roberts, R. Jewell, M. Luhr, B. Jordan, D. Heaton, A. Rastede.  
 Third Row: R. Schubert, B. Noe, J. Brawner, R. Smith, D. Anderson, D. Smith.

THIS PAGE SPONSORED BY  
 TOM RIVERS

## First Team Cheerleaders



Left to Right: R. Engstedt, D. Rasmussen, P. McCord, L. Holmes.

## Second Team Cheerleaders



Left to Right: A. Carpenter, L. Kjer, P. Gillaspie, K. Kjer.

THIS PAGE SPONSORED BY  
DELBERT LINAFFELTER  
KENNETH LINAFFELTER

# Football Team



First Row: R. Jewell, C. Osbahr, B. Jordan, D. Boeshart, F. Plueger, D. Steele, B. Hickman.

Second Row: Coach, Mr. Carter, D. Durant, T. Fahrenholz, R. Isom, M. Luhr, D. Chase, R. Roberts, L. Book, Student Manager.

Third Row: B. Noe, D. Smith, D. Osbahr, R. Smith, D. Gotch, R. Wheeler, J. Brawner, R. Schubert.

The football team was hampered this year by inexperienced players and by key injuries to lettermen. Larry Schlines was out for the season with a foot injury. Dean Boeshart, regular fullback, was on the bench a good part of the time with a knee injury. Allen came the closest to victory in the game with Hartington which was decided in the final minutes. A number of players who lettered this year look promising for the next season.

	WE	THEY		WE	THEY
Wakefield.....	6	13	Randolph.....	6	13
Crofton.....	0	25	Holy Trinity.....	0	28
Ponca.....	6	39	Hartington High.....	13	20
Laurel.....	6	43	Pender.....	7	60
Pilger.....	0	33			



# First Team Basketball



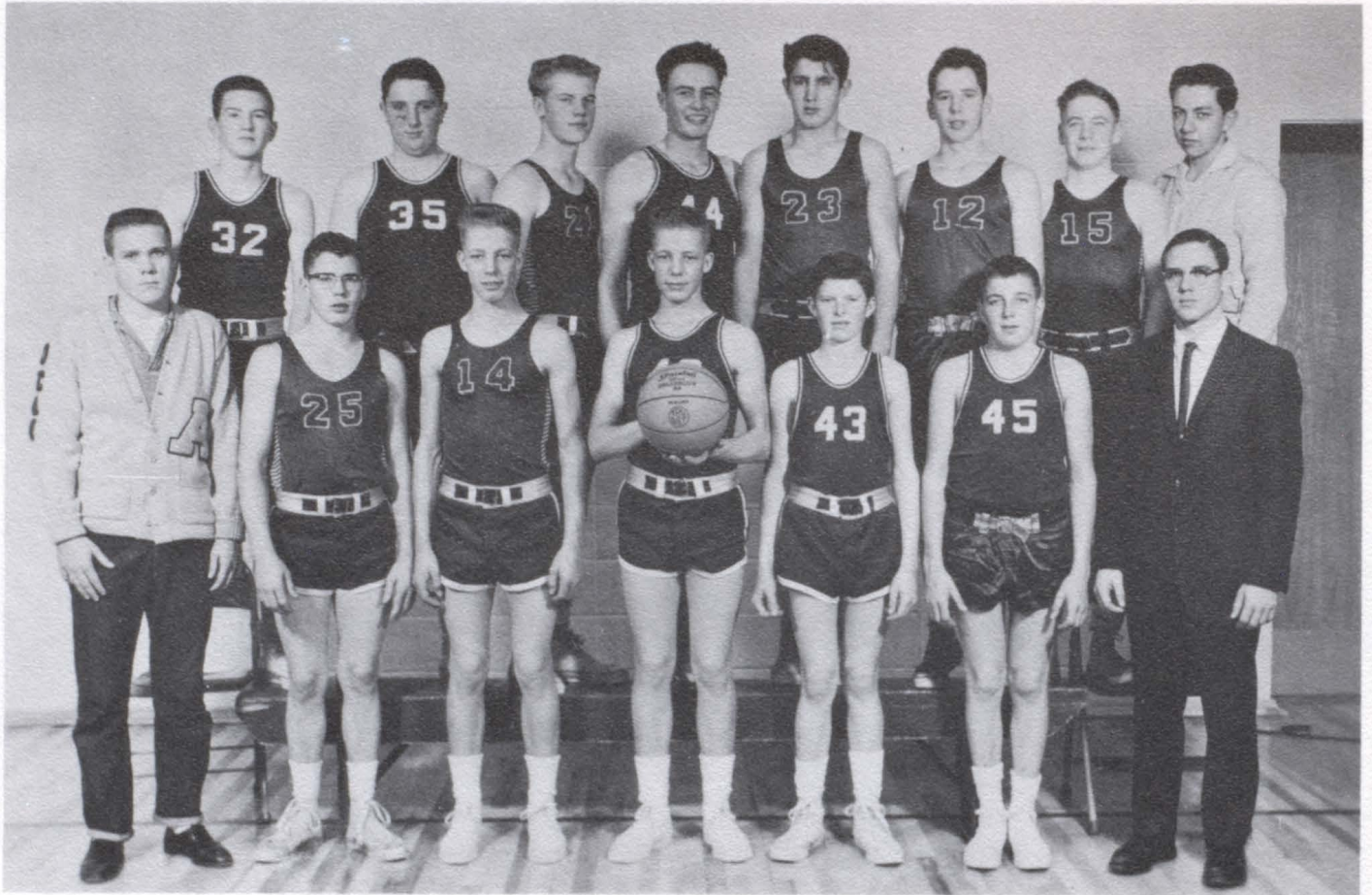
From Left to Right: R. Isom, D. Durant, B. Jordan, T. Fahrenholz, L. Geiger, R. Jewell, D. Chase, R. Wheeler, Kneeling, D. Heaton, Student Manager, B. Noe, R. Schubert, Coach, Mr. Carter.

Two trophies were won by the First Team this year. The team won a trophy for finishing in second place at the Lewis and Clark Tournament. At the Dixon County Tournament, the team won the Consolation Trophy by defeating Emerson Sacred Heart.

Ponca defeated Allen in the second round at the District Tournament. Larry Schlines, a regular forward, returned to action after the first of the year upon recovering from a foot injury. Only one member of the first five will graduate this year. Next years prospects look promising.

	WE	THEY		WE	THEY
Ponca .....	32	43	Waterbury .....	42	49
Coleridge .....	27	45	Emerson S.H. ....	59	26
Pilger .....	43	59	Wakefield .....	41	59
Crofton .....	35	47	Winside .....	47	68
Laurel .....	34	83	Hartington H.T. ....	37	39
Walthill .....	48	46	Emerson .....	65	36
Ponca .....	51	43	Newcastle .....	68	52
Lsurel .....	55	67	Randolph St. Francis .....	57	51
Randolph .....	58	52	Ponca .....	43	65
Ponca .....	65	54			

# Second Team Basketball



First Row: Student Manager, D. Boeshart, C. Osbahr, R. Smith, D. Smith, A. Rastede, L. Book, Coach, Mr. McGee.  
 Second Row: D. Gotch, D. Rice, R. Roberts, M. Luhr, T. Fahrenheitz, D. Osbahr, R. Schubert, Student Manager, D. Heaton.

Although the Second Team did not win a majority of its games, the boys fought hard and gained valuable experience. The team consisted entirely of underclassmen; many of the members were freshmen and sophomores. One member, Merlyn Luhr, moved away at the end of the first semester. During the second semester Loyal Steube and Harold Pearson joined the team.

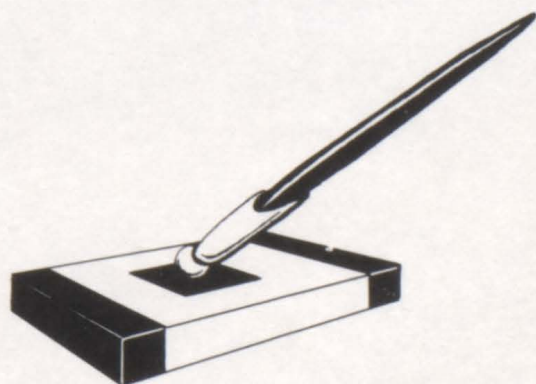
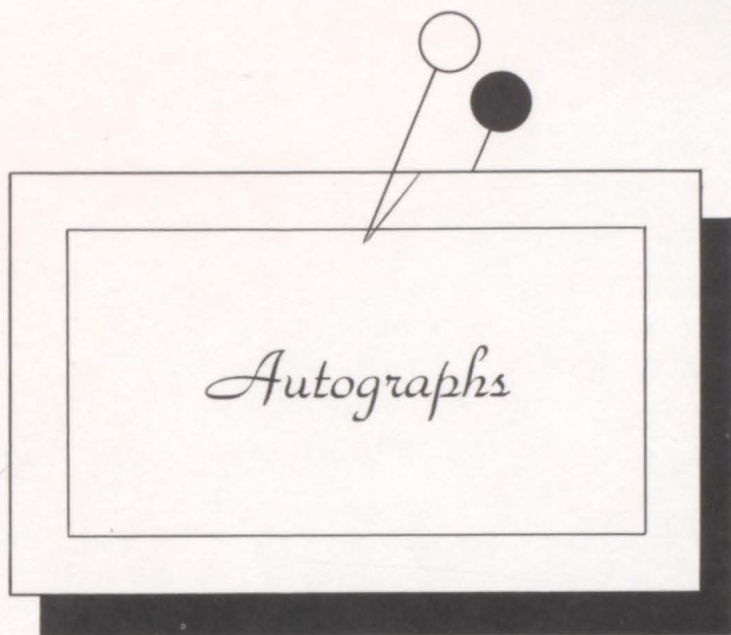
	WE	THEY		WE	THEY
Ponca.....	11	24	Randolph.....	32	27
Coleridge.....	11	32	Wakefield.....	21	24
Pilger.....	23	42	Winside.....	16	24
Crofton.....	36	45	Hartington H.T. ....	16	33
Laurel.....	13	32	Emerson.....	17	36
Walthill.....	12	32	Newcastle.....	29	27

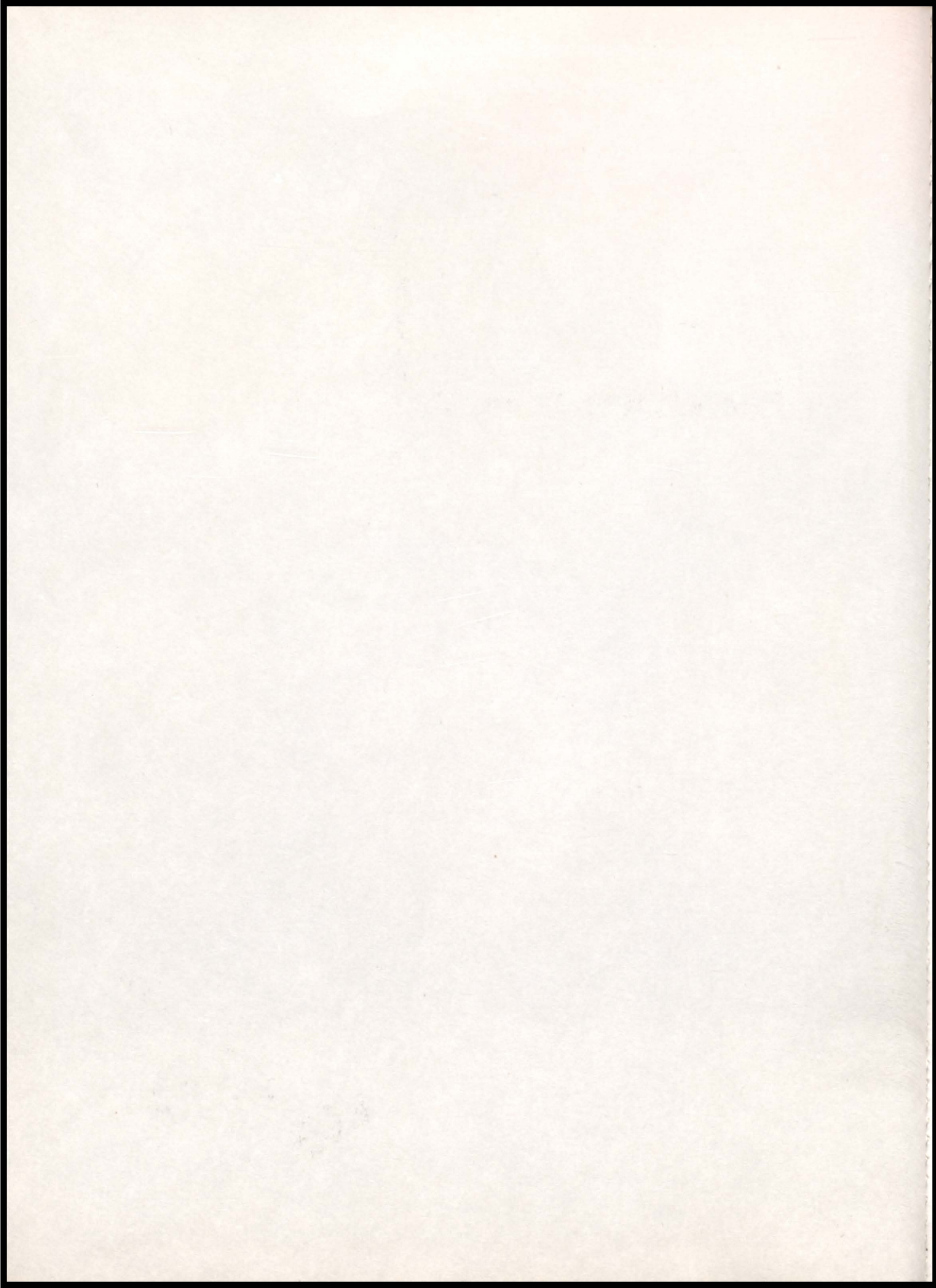
*Snapo*



*Snapo*







THE LINCOLN YEARBOOK COMPANY  
FORMERLY SERIGHT PUBLICATION BUREAU



PHONE 2-6316  
436 SOUTH ELEVENTH STREET  
LINCOLN 8, NEBRASKA

